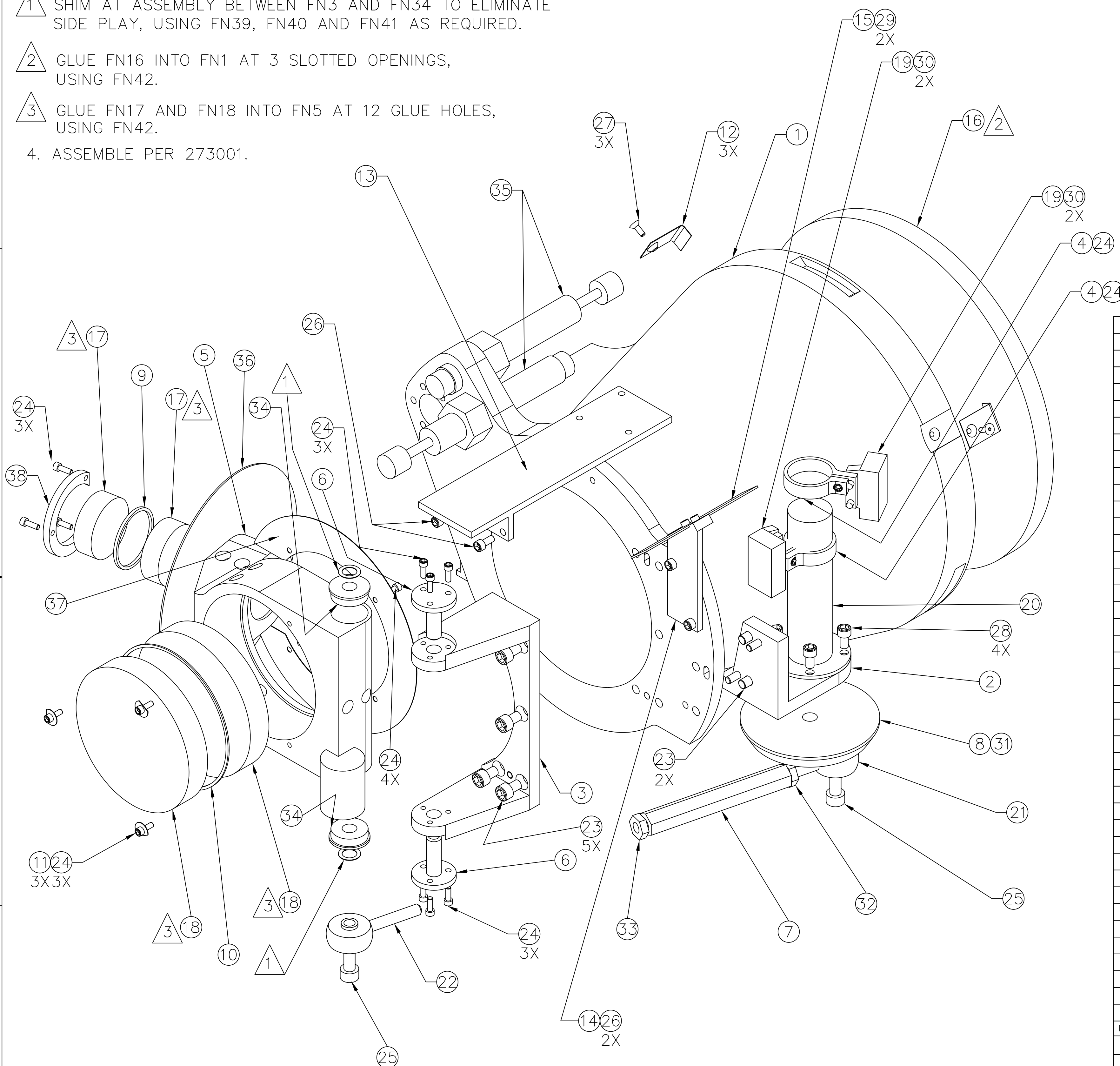


NOTES:

- 1 SHIM AT ASSEMBLY BETWEEN FN3 AND FN34 TO ELIMINATE SIDE PLAY, USING FN39, FN40 AND FN41 AS REQUIRED.
- 2 GLUE FN16 INTO FN1 AT 3 SLOTTED OPENINGS, USING FN42.
- 3 GLUE FN17 AND FN18 INTO FN5 AT 12 GLUE HOLES, USING FN42.
- 4. ASSEMBLE PER 273001.

CAD MAINTAINED, CHANGES SHALL BE INCORPORATED BY DESIGN ACTIVITY

REVISION HISTORY			
REV	DESCRIPTION	DATE	APPROVAL



FIND NO.	QTY REQD	PART OR IDENT NO.	NOMENCLATURE OR DESCRIPTION	NOTES OR REMARKS
42	AR	RTV3145	ADHESIVE/SEALANT	DOW CORNING
41	AR	DB8D4	SPACER, .010 INNER RACE	ALLIED DEVICES
40	AR	DB8D2	SPACER, .005 INNER RACE	ALLIED DEVICES
39	AR	DB8D24	SPACER, .002 INNER RACE	ALLIED DEVICES
38	1	231418	RETAINER, LIGHT STOP	
37	1	231417	LIGHT STOP, WIDE FIELD MAGNIFIER	
36	1	231416	LIGHT STOP, HR MAGNIFIER	
35	2	PRO25IF-3B	SHOCK ABSORBER, W/STOP NUTS & HEX JAM NUTS	ENDINE
34	2	DE2D9	FLANGED BEARING, ABEC-7	ALLIED DEVICES
33	1		NUT, HEX LEFT HANDED, 10-32	PER 271100
32	1		NUT, HEX 10-32	PER 271100
31	1	DCS52	SHSS, SILVER TIP 4-40 X .125LG.	ALLIED DEVICES
30	4		SHCS, 4-40 X .375LG.	PER 271100
29	2		SHCS, 2-56 X .125 LG.	PER 271100
28	4		SHCS, 6-32 X .25LG.	PER 271100
27	3		FHCS, 2-56 X .25LG.	PER 271100
26	4		SHCS, 4-40 X .25LG.	PER 271100
25	2		SHCS, 10-32 X .625LG	PER 271100
24	18		SHCS, 2-56 X .25LG.	PER 271100
23	7		SHCS, 8-32 X .25LG.	PER 271100
22	1	REP3ML3-FS464	BALL BEARING ROD END, LEFT HAND	TORRINGTON
21	1	REP3MR3-FS464	BALL BEARING ROD END, RIGHT HAND	TORRINGTON
20	1	245013	PLANETARY GEAR MOTOR	
19	2	245005	SENSOR	
18	2	(210007)	WIDE FIELD MAGNIFIER	
17	2	(210006)	HR MAGNIFIER	
16	1	(210009)	FIELD LENS #2	
15	1	231415	BLADE, SENSOR TRIP	
14	1	231414	BRACKET, BLADE	
13	1	231413	BRACKET, FLEX CIRCUIT	
12	3	231412	CLIP, FIELD LENS	
11	3	231411	CLIP, LENS	
10	1	231410	SPACER, WIDE FIELD	
9	1	231409	SPACER, HR MAGNIFIER	
8	1	231408	HUB	
7	1	231407	ROD, CONNECTING	
6	2	231406	FLANGED PIN, FLIPPER	
5	1	231405	FLIPPER, HI RES INTERCHANGE	
4	2	231404	CLAMP, SENSOR	
3	1	231403	BRACKET, FLIPPER	
2	1	231402	BRACKET, FLIPPER MOTOR	
1	1	231401	SHUTTLE, FIELD LENS #1	

D
C
B
A

D
C
B
A

UNLESS OTHERWISE SPECIFIED
DIM ARE IN INCHES
TOL ON ANGLE ± .50°
2PL ± .01 3 PL ± .005
INTERPRET DIM AND TOL PER
ASME Y14.5M - 1994

MACHINE FINISH 63

THIRD ANGLE PROJECTION

CONTRACT NUMBER	
DWN BY E. LACROIX	DATE 08/08/00
CHKR S. GREGORY	DATE 09/05/00
ENGR S. GREGORY	DATE 09/05/00
DESIGN APPROVAL S. GREGORY	DATE 09/05/00
RELEASE APPROVAL	DATE

NATIONAL SOLAR OBSERVATORY
SACRAMENTO PEAK
SUNSPOT, NEW MEXICO

HI RES INTERCHANGE/
FIELD LENS ASSY

SIZE D 55704 CAGE CODE N/A DWG NO. 231400 REV -

SCALE 1/1 SHEET 1 OF 1